



Ellen Industries  
ISO 9001 certified

Ductile/S.G Iron  
Grey Iron  
Castings



Machined  
Surface Treated  
& Application Ready

Ellen Industries is a 25 year old company, ideally located in the industrial hub of Coimbatore in South India.

Ellen Industries manufactures S.G./Ductile & Grey Iron castings and is ISO 9001:2008 certified by TÜV

**We provide End to End Solution from Tooling Development to supply of Machined, Surface Treated & Application Ready castings.**

## CASTING RANGE

### Weights:

S.G./Ductile Iron (EN-GJS): 5 to 40 Kgs  
Grey Iron (EN-GJL): 5 to 70 Kgs

### Box Dimensions:

400 x 520 x 150/150 mm  
520 x 520 x 150/150 mm  
650 x 650 x 300/250 mm

## CASTING GRADES PRODUCED

### Grades of S.G. /Ductile Iron (Ferritic & Pearlitic)

| Material                             | DIN 1693 | EN 1563          |
|--------------------------------------|----------|------------------|
| S.G./<br>Ductile<br>Iron<br>Castings | GGG 40   | EN-GJS-400-18    |
|                                      | GGG 40.3 | EN-GJS-400-18 LT |
|                                      | GGG 50   | EN-GJS-500-7     |
|                                      | GGG 60   | EN-GJS-600-3     |

### Grades of Grey Iron

| Material              | DIN 1691 | EN         |
|-----------------------|----------|------------|
| Grey Iron<br>Castings | GG 15    | EN-GJL-150 |
|                       | GG 20    | EN-GJL-200 |
|                       | GG 25    | EN-GJL-250 |
|                       | GG 30    | EN-GJL-300 |

## SURFACE TREATMENT PER YOUR SPECIFICATIONS

Metalization  
Electro Cataphoresis Painting  
Liquid Painting

Hot Dip Galvanization  
Powder Coating  
Painting as per ACQPA System



**Machined**

**Surface**





**Udyog Pratibha  
Ratan Award**

**Indian Institute of Foundrymen**

**"Economic Growth Survey"  
Government of India**

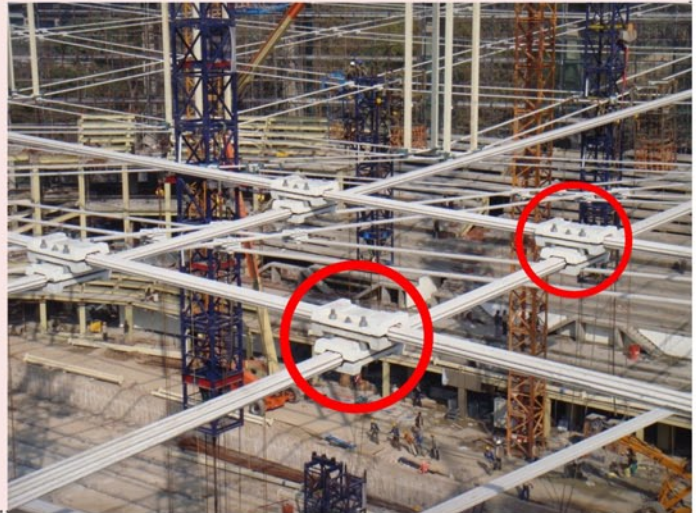
### Special Projects

Supplied Fully Finished Clamps ready for installation in the roofing system of the SP Mukherjee Aquatic Stadium in Delhi, India.

Specification:  
Cast in **EN-GJS-400-18 LT** Grade & Machined.

Surface Treatments: **Hot Dip Galvanized**, Sand Blasted, Three Coat Painting as per **ACQPA C5 GNV 1057**

Tests Conducted: **Radiography, Charpy Absorption**  
Tensile, Elongation, Hardness & Assembly



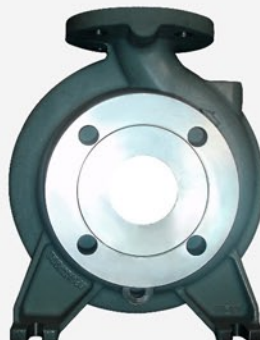
## QUALITY CONTROL

Our team at Ellen has a high commitment to quality and customer service. Well refined online process control methods are backed with Lab testing. A number of testing procedures are incorporated into our daily activities including:

|                   |  |
|-------------------|--|
| <b>Sand</b>       | Testing and control of clay bonded moulding sand to provide casting accuracy and surface finish                    |
| <b>Mechanical</b> | Hardness, microstructure, elongation & tensile strength tests ensure our metal grades adhere to required standards |
| <b>Chemical</b>   | Our in-house Spectrometer ensures that chemical composition conforms to the material grades                        |

We are happy to accommodate any additional testing requirements including:

**Charpy Absorption test at Ambient & (-20° C)**  
**Radiography test**  
**Ultrasonic test**  
**Die Penetration test**



**Treated**

**Application Ready**

# FOUNDRY FACILITIES

| Plant/Machinery/Test Equipment                           | Make                      | Capacity/ Range/Size                  | Quantity |
|--|---------------------------|---------------------------------------|----------|
| <b>MELTING:</b>  |                           |                                       |          |
| 1. Induction Furnace                                     | Inductotherm              | 1550KW with 2 crucibles<br>of 750 Kg  | 1        |
| 2. Cupola Furnace  | Pioneer                   | 2 Mt/hour                             | 1        |
| <b>SPECTROMETER:</b>                                     |                           |                                       |          |
| 1. Spectrometer  | Spectro                   | Fe & Cu based                         | 1        |
| <b>MOULDING:</b>   |                           |                                       |          |
| 1. Fully Mechanised sand plant with<br>high speed muller | ----                      | 10 Metric ton/hour<br>Box 400x520x150 | 4        |
| 2. ARPA 300 Moulding machine.                            | Disa                      | Box 520x520x150/200                   |          |
| 3. ARPA 450 Moulding machine                             | Sarvamangala              | Box 650x650x300                       | 2        |
| 4. Screw Air Compressor                                  | Elgi                      | 30 HP                                 | 1        |
| 5. Screw Air Compressor                                  | Elgi                      | 25 HP                                 | 1        |
| <b>CORE SHOP:</b>  |                           |                                       |          |
| 1. Core sand mixer                                       | Wesman                    | 100 Kg                                | 1        |
| 2. Core Oven   | KSM                       | 24 Kw                                 | 1        |
| 3. Core Shooter M/C Cold Box                             | G.S.Machinery             | 10 Kg                                 | 1        |
| 4. Process   |                           |                                       |          |
| <b>FETTLING:</b>   |                           |                                       |          |
| 1. Shot blasting machine.                                | Sree Abirami<br>Equipment | 350 Kgs                               | 1        |

| Plant/Machinery/Test Equipment  | Make                 | Capacity/ Range/Size | Quantity |
|---|----------------------|----------------------|----------|
| <b>PATTERN SHOP:</b>  |                      |                      |          |
| 1. Facilities available for matchplate mounting and wooden pattern manufacturing. | ---                  | ---                  | --       |
| 2. Lathe.   | Kirloskar.           | --                   | 1        |
| 3. Surface Table  | CI                   | 6 ft x 4 ft          | 1        |
| 4. Measuring Instruments  |                      | 0 - 600              |          |
| 5. Height Gauge & Verniers  |                      | 0 - 150              |          |
|   | --                   | 0 - 300              | --       |
| <b>LABORATORY :</b>   |                      |                      |          |
| 1. Complete facilities for chemical analysis of metal.                            | --                   | --                   | --       |
| 2. Mould Hardness Tester  | Versatile Equipments | --                   | 1        |
| 3. Green Compression strength machine   | Versatile Equipments | --                   | 1        |
| 4. Sieve Shacker  | Versatile Equipments | --                   | 1        |
| 5. Sand Rammer  | Versatile Equipments | --                   | 1        |
| 6. Permeability Meter   | Versatile Equipments | --                   | 1        |
| 7. Clay washer  | Versatile Equipments | --                   | 1        |
| 8. Instant carbon silicon analyzer.   | Suyash               | --                   | 1        |
| 9. Universal testing machine.   | Fine                 | 40 Tons              | 1        |
| 10. Brinell hardness testing machine  | Fine                 | 3000 Kg              | 1        |
| 11. Inverted stage metallurgical microscope                                       | Metzer               | --                   | 1        |
| 12. Image Analyser  | Metallogrphix        | --                   | 1        |
| 13. Core Shooter M/C Cold Box Process   | G.S.Machinery        | 10Kg                 | 1        |



## PRODUCT SEGMENTS

### GENERAL ENGINEERING

Motor Components  
Compressor Components  
Transmission Components

### FLUID HANDLING

Valves  
Pumps

### CONSTRUCTION

Post Tensioning Components

### AUTOMOBILE

Steering Boxes



## CONTACT

Vignesh Dhamodarasamy  
Director  
Mobile +91 99655 14812  
vignesh@ellengroup.in

Mr.N.Subramaniam  
General manager  
Mobile +91 99655 14805  
info@ellenfoundries.co.in

Ellen Industries Pvt.Ltd.,  
551 A, VK Road, Peelamedu,  
Coimbatore 641 004, India.

Phone +91 422 2571573  
info@ellenfoundries.co.in

[www.ellenfoundries.co.in](http://www.ellenfoundries.co.in)